

Mod Manager by AVL NAN

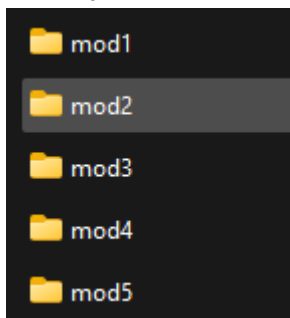
READ ME



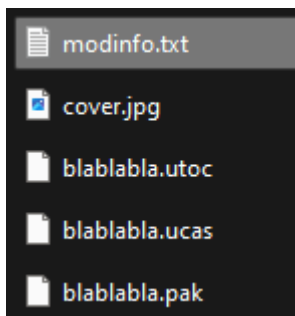
BEFORE STARTING

1° If you can't open it make sure you have microsoft .net 8.0 installed.
(<https://dotnet.microsoft.com/pt-br/download/dotnet>)

2° Put your **mod folder** inside modbank

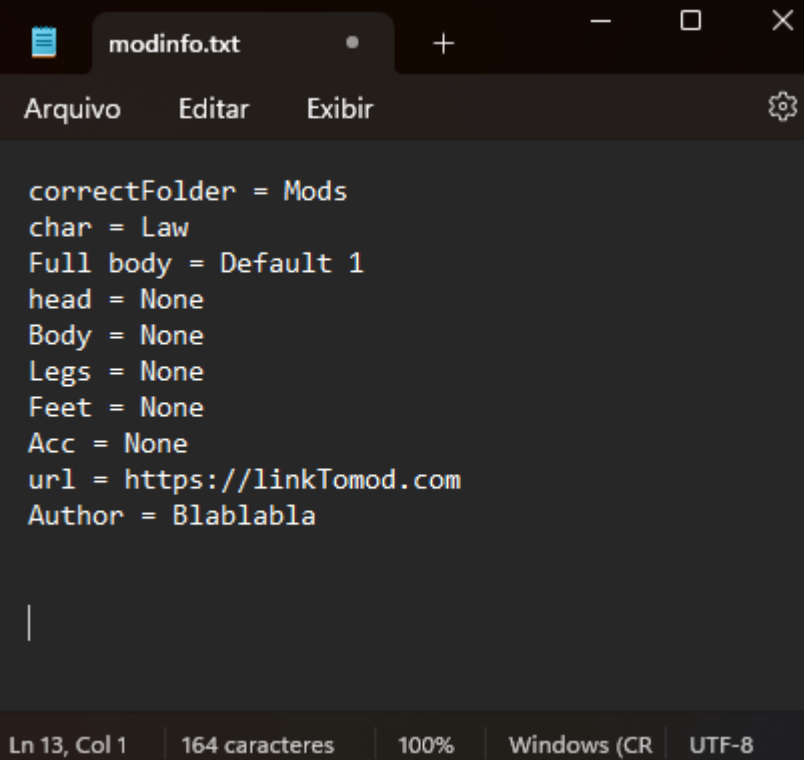


3° Your mod folder MUST HAVE modinfo.txt and cover image MUST BE JPG



p.s: cover.jpg isn't mandatory

3º modinfo.txt must contain the following structure and correctFolder must not be empty



The screenshot shows a text editor window titled 'modinfo.txt'. The menu bar includes 'Arquivo', 'Editar', and 'Exibir'. The text content is as follows:

```
correctFolder = Mods
char = Law
Full body = Default 1
head = None
Body = None
Legs = None
Feet = None
Acc = None
url = https://linkTomod.com
Author = Blablabla
```

The status bar at the bottom indicates 'Ln 13, Col 1', '164 caracteres', '100%', 'Windows (CR)', and 'UTF-8'.

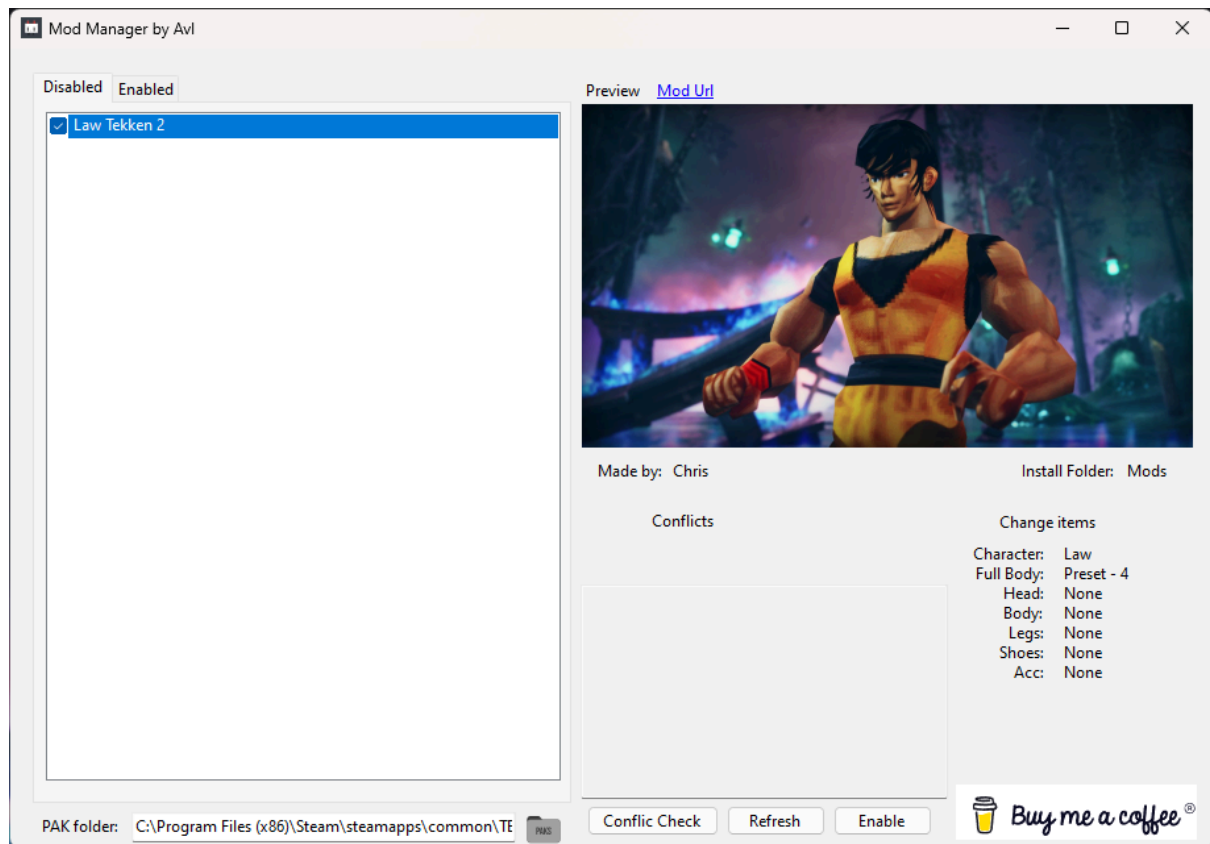
- correctFolder -> Folder whose mod should be placed (mod, mods, logicmods)
- char -> Character being affected by mod
- Full body -> full body item affected by mod
- head -> head item affected by mod
- Body -> Body item affected by mod
- Legs -> Leg item affected by mod
- Feet -> Feet item affected by mod
- Acc -> Accessory item affected by mod
- url -> link to page where you downloaded the mod
- Autor -> Person that made the mod

IMPORTANT

- Use "None" for parts that ARE NOT affected by the mod
- If mod applies for more than one character use: char = All ... (e.g: char= All Girls)
- Don't use "".
- For better results use the item names as it is written in game.

Hands on

(set pak folder path before anything else 😊)



PAK folder text box: Path to the game PAK folder (click on folder icon and choose the correct folder, usually C:\Program Files (x86)\Steam\steamapps\common\TEKKEN 8\Polaris\Content\Paks).

Disabled Tab: Here you find all mods that ARE NOT active.

Enabled Tab: Here you find all mods that ARE active.

Preview: Shows mod image (cover.jpg)

Conflict Check: If something is amiss, a warning will be shown

Refresh: Update both tabs

Enable/Disable: Activate or deactivate MARKED mods.

Buy me a Coffee: If you are enjoying, please consider donating :3